

Keeping you
snug wherever
you call home...

Application Guidance
FLOORS



**therma
fleece**[®]
British wool insulation

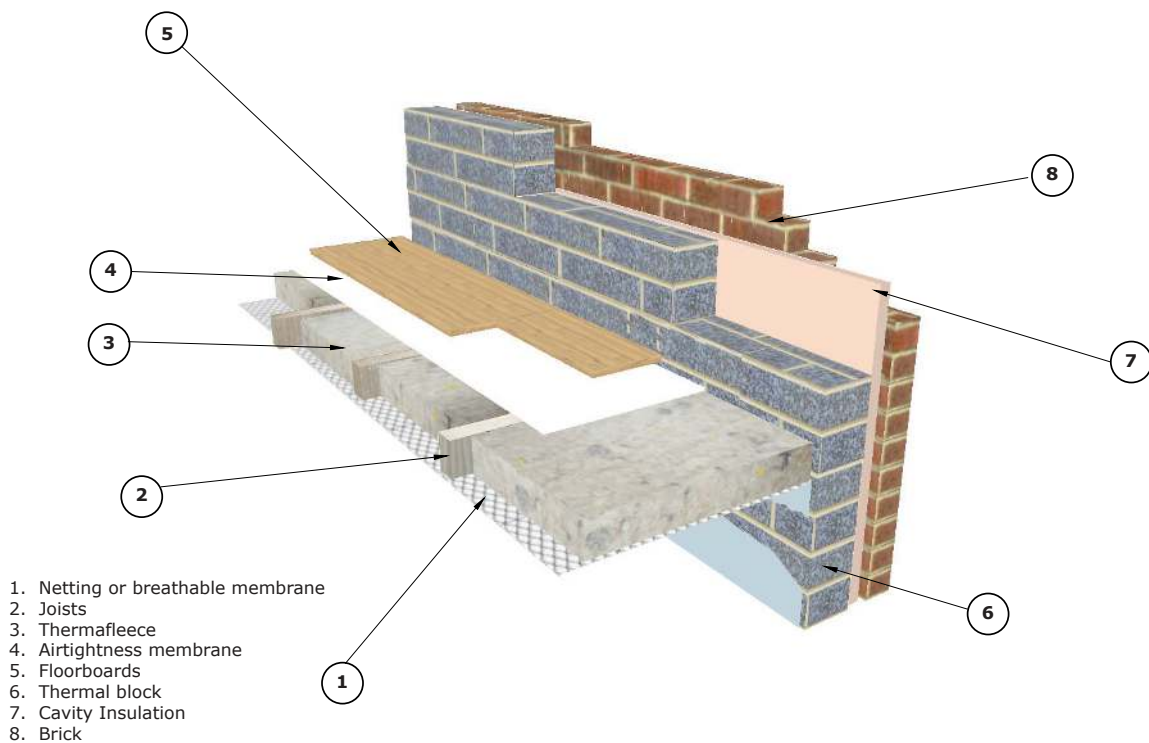
SUSPENDED GROUND FLOOR

Thermafleece is an ideal choice for helping minimise heat loss through suspended floors. Fit the insulation between the joists ensuring all joints are close-butted to avoid air gaps. Pay particular attention to the perimeter of the floor, filling every gap with insulation.

Support insulation with netting to the underside of the joist. An airtight breather membrane can be fitted to the underside of the joist to minimise air movement through the floor.

If the flooring comprises open floorboards, you could install an airtight breather membrane on the top side of the Thermafleece to avoid a build-up of dust and debris on top of the insulation and to reduce any movement.

Maintain a ventilated space at least 150mm below the level of the insulation. Ensure that all air vents under the floor are unobstructed and take care not to block ventilation air path.



Typical U-Value - W/m²K

	100 mm	125 mm	150 mm	175 mm	200 mm
UltraWool Between Floor Joists	0.30	0.26	0.22	0.20	0.18
CosyWool Slab Between Floor Joists	0.31	0.27	0.23	0.21	0.19
CosyWool Roll Between Floor Joists	0.31	0.27	0.24	0.21	0.19

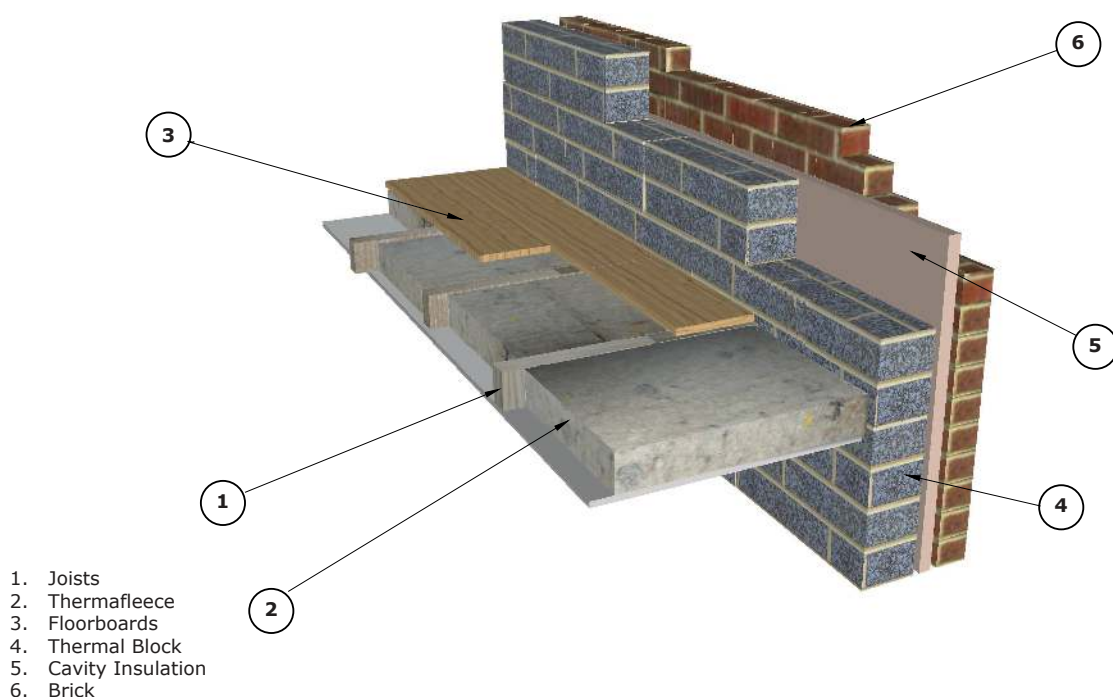
INSULATING BETWEEN FLOORS

Thermafleece can be easily installed between joists to provide additional thermal insulation and acoustic absorption within the structure.

Fit the insulation between the joists ensuring all joints are close-butted to avoid air gaps. Pay particular attention to the perimeter of the floor, filling every gap with insulation.

The friction of the insulation should hold it in place. However, if insulation is installed from below, you can hold it in place using netting until the ceiling layers are secured.

As with other insulation products, it may be necessary in some cases to de-rate electrical cables buried in insulation.



YOUR NOTES



This information is given in good faith as a general guide to users and specifiers of Thermafleece. This information is not a substitute for any design that may be necessary to determine suitability of the products for your end-use. Since we have no influence over project or site specific issues, Eden Renewable Innovations Ltd makes no warranties or accepts no liability in relation to the use of this information.

Version 5.02

Eden Renewable Innovations Ltd

Soulands Gate, Dacre, Penrith, Cumbria, CA11 0JF

Sales and Technical advice 017684 86285 Fax: 01768 486825

Email: enquiries@thermafleece.com • Web: www.thermafleece.com

